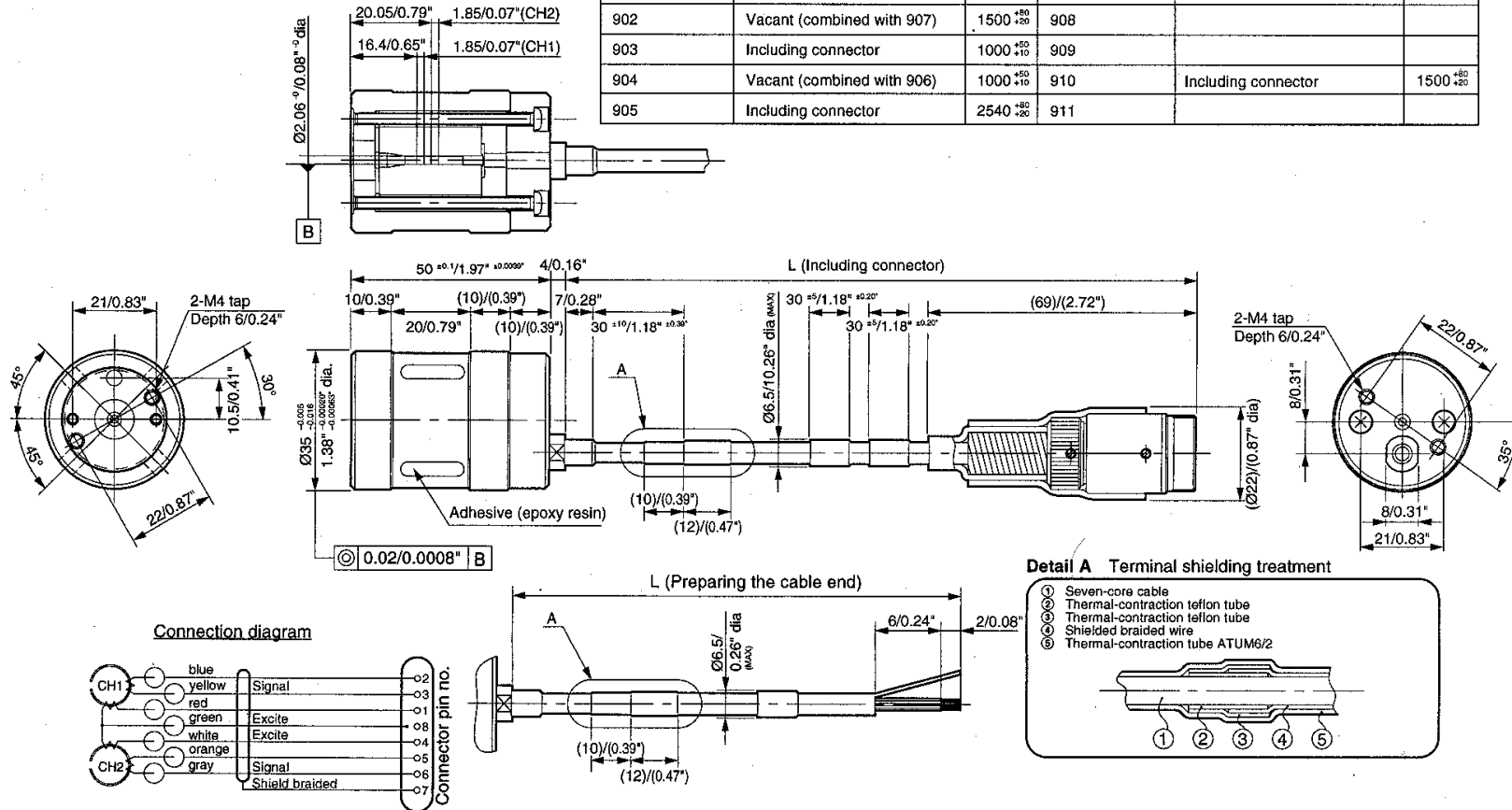


HA705 (Head)

Special connection model	Cable terminal processing, description	L measurement	Special connection model	Cable terminal processing, description	L measurement
Standard	Preparing the cable end	500 ⁺⁵⁰ / ₊₁₀	906	Preparing the cable end	1000 ⁺⁵⁰ / ₊₁₀
901	Including connector	560 ⁺⁵⁰ / ₊₁₀	907	Preparing the cable end	1500 ⁺⁸⁰ / ₊₂₀
902	Vacant (combined with 907)	1500 ⁺⁸⁰ / ₊₂₀	908		
903	Including connector	1000 ⁺⁵⁰ / ₊₁₀	909		
904	Vacant (combined with 906)	1000 ⁺⁵⁰ / ₊₁₀	910	Including connector	1500 ⁺⁸⁰ / ₊₂₀
905	Including connector	2540 ⁺⁸⁰ / ₊₂₀	911		



Insulation resistance and insulation yield strength

There should be DC 250 V over at least 50 m and a one-minute leakage current of 5 mA or less at AC250 V between the coils, coil and head unit, head unit and housing, and shield and head unit.

Note

The connection section of the thermal-contraction tube ATUM6/2 for the cable does not have a designated location. (This is because the length varies depending on the contraction state.)