

# Installation IBR USB Driver package



The driver installation package *IMB-USB\_RF1-USB\_inst.exe* installs the IBR USB Driver. This driver is required to operate the following devices :

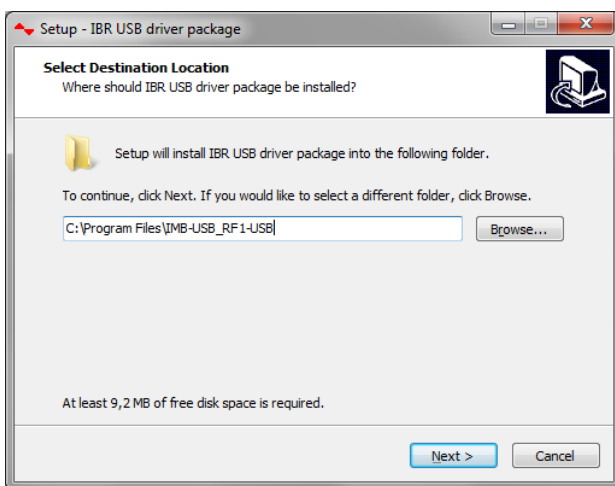
- IMB-usb ( F120 010 )
- IBRit-rf1-usb ( F604 001 )
- IBR USB Dongle ( F720 002 )
- ISM-usb ( F620 010 )
- ISi-usb (F390 020 )

The driver installation package is located on the CD-ROMs ,*IBR Support Software*' and ,*Software for Metrology and SPC*' in the directory <CDROM>:\USB-Driver\IMB-USB\_RF1-USB\IMB-USB\_RF1-USB\_inst.exe.

The most recent version can be downloaded at [http://www.ibr.com/download/IMB-USB\\_RF1-USB\\_inst.zip](http://www.ibr.com/download/IMB-USB_RF1-USB_inst.zip) .

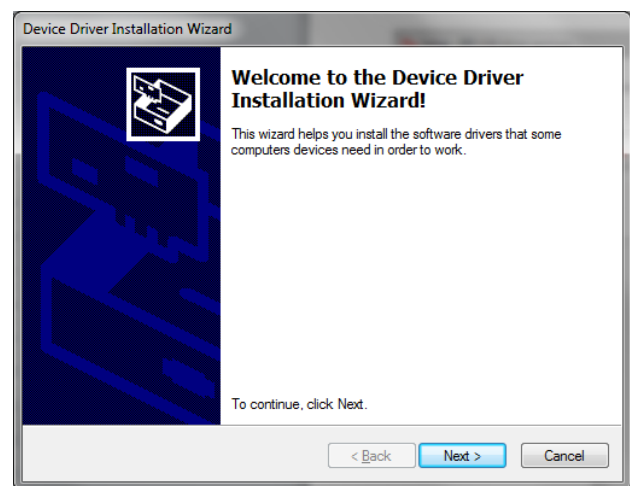
1.

When the driver installation package is started, the installer asks for a directory where the driver files should be copied to :



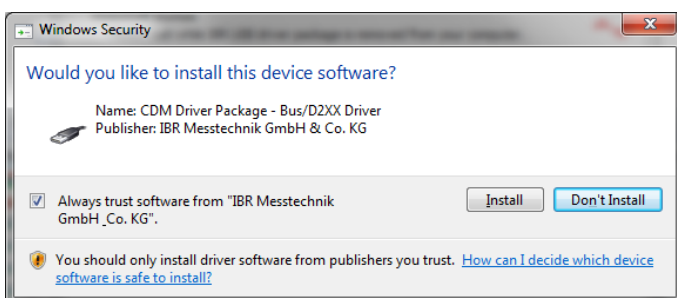
2.

By clicking on Next, the installer copies the required files to the directory selected and automatically opens the Device Driver Installation Wizard :



3.

The Device Driver Installation Wizard asks you to confirm the signature of the driver. You need to allow the installation of the driver :



4.

When the driver installation is completed, the Device Driver Installation Wizard shows you the result of the driver installation :

