

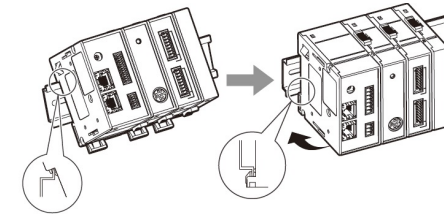


Intelligent Multi Measurement Station LT80 / MG80 series

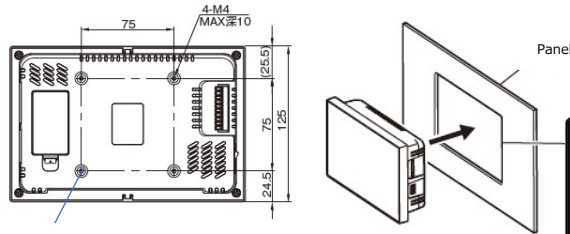
Flexible installation and measurement

- ✓ Highly visible 7-inch LCD with touch screen
- ✓ Panel mount and VESA standard display stand can be used for installation

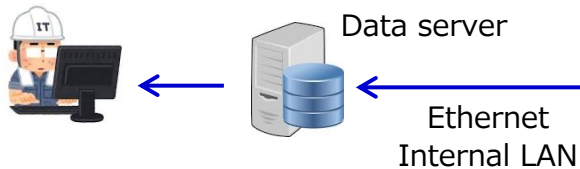
- ✓ Easy installation with DIN rail mount



- ✓ DK gauge and DT gauge can be connected



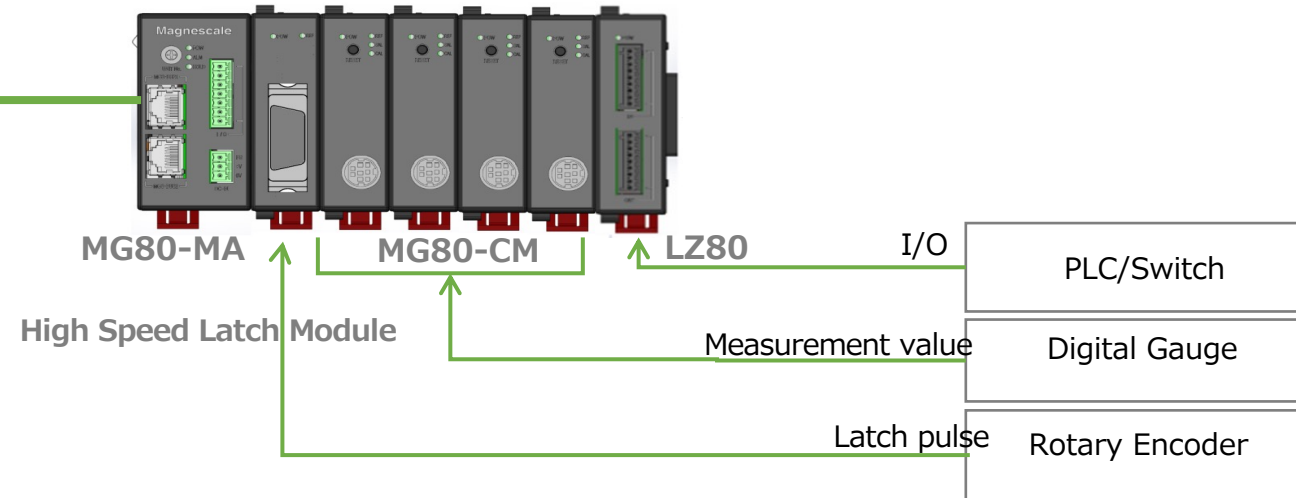
VESA-compatible 75 x 75mm



Measurement data management
Trend, Prediction, Yield



LT80-NE



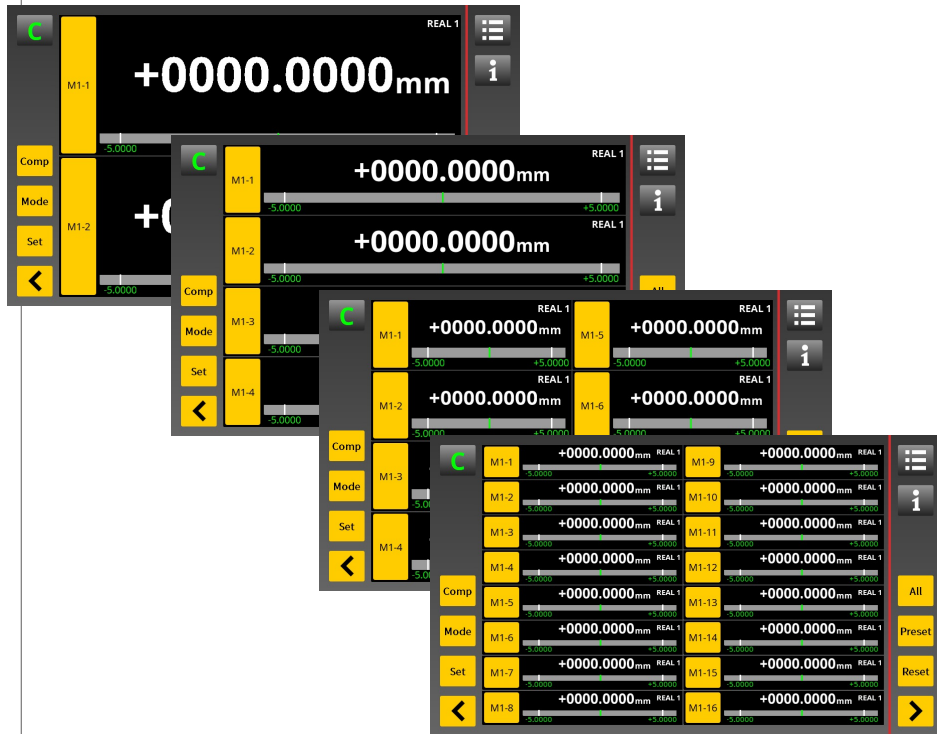
- ✓ Up to 4 main module can be linked to LT80 using the unique Ethernet communication protocol
- ✓ Connect with a general-purpose LAN cable (CAT5e or higher). Max. cable length between modules : 20m

Various configuration functions and easy set-up by using HMI

LT80-NE
Display unit

✓ Selectable from 2, 4, 8, 16axis display

✓ Each axis can be set by menu



Main menu



Measuring menu



Reference point setting

M1 ユニット番号	原点	ユニット現在値	プリセット	Ref	Set
1	✓	+0000.0000	+0.0000	Ref	Set
2	✓	+0000.0000	+0.0000	Ref	Set
3	✓	+0000.0000	+0.0000	Ref	Set
4	✓	+0000.0000	+0.0000	Ref	Set
5	✓	+0000.0000	+0.0000	Ref	Set
6	✓	+0000.0000	+0.0000	Ref	Set
7	✗				
8	✗				

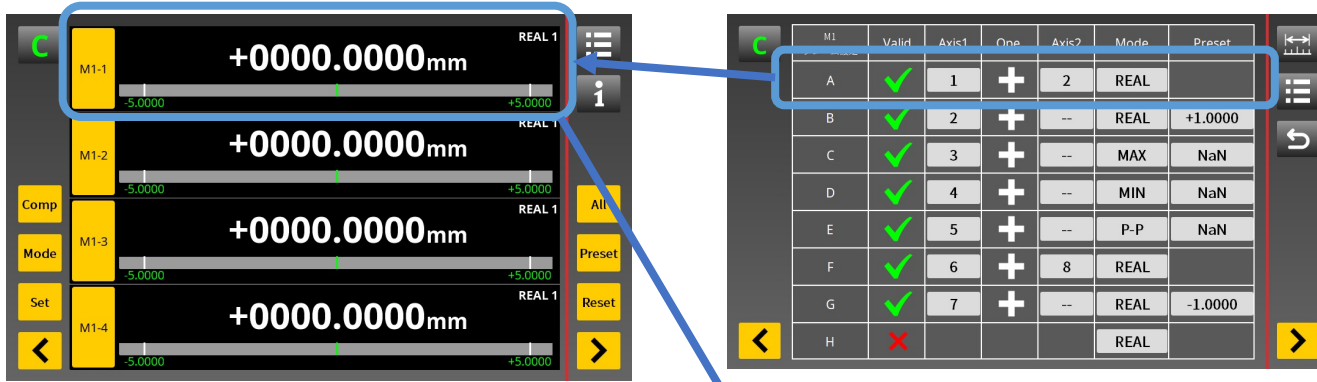
Comparator setting

M1/A コンパレータ	Mode	C1	C2	C3	C4
1	4	-5.0000	-2.5000	2.5000	5.0000
2		-5.0000	-2.5000	2.5000	5.0000
3		-5.0000	-2.5000	2.5000	5.0000
4		-5.0000	-2.5000	2.5000	5.0000
5		-5.0000	-2.5000	2.5000	5.0000
6		-5.0000	-2.5000	2.5000	5.0000
7		-5.0000	2.5000	2.5000	5.0000
8		-5.0000	nan	nan	5.0000

- Setting items

Gauge setting, resolution, Comparator, P-P mode, I/O setting, display format, data latch, data save/output, Parameter reading, Connection information, software upload

Flexible display setting and measurement mode can be set by View frame setting



✓ Gauge axis setting, measurement mode (current value, MAX, MIN, P-P), preset value, add/sub setting with other gauges, etc. can be freely set for each View frame.

View frame

View frame number A to P

Preset value set

Measurement value
Displays the value according to the measurement mode

Measurement mode
Display Current value (REAL), MAX, MIN, Peak to Peak

Main module ID

The combination number of the selected comparator
Up to 8 sets can be set in one View frame

Reference point function enable Pause function enable

Selected comparator value



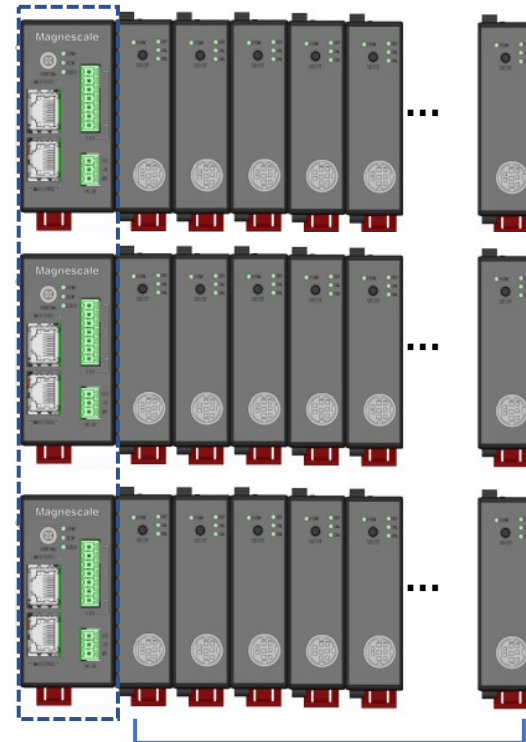
Up to 32 gauges can be connected with various connection

LT80-NE
Display unit



Maximum connectable main module : 4

2 port for module connection



MG80-MA
Main Module

MG80-CM
Counter Module

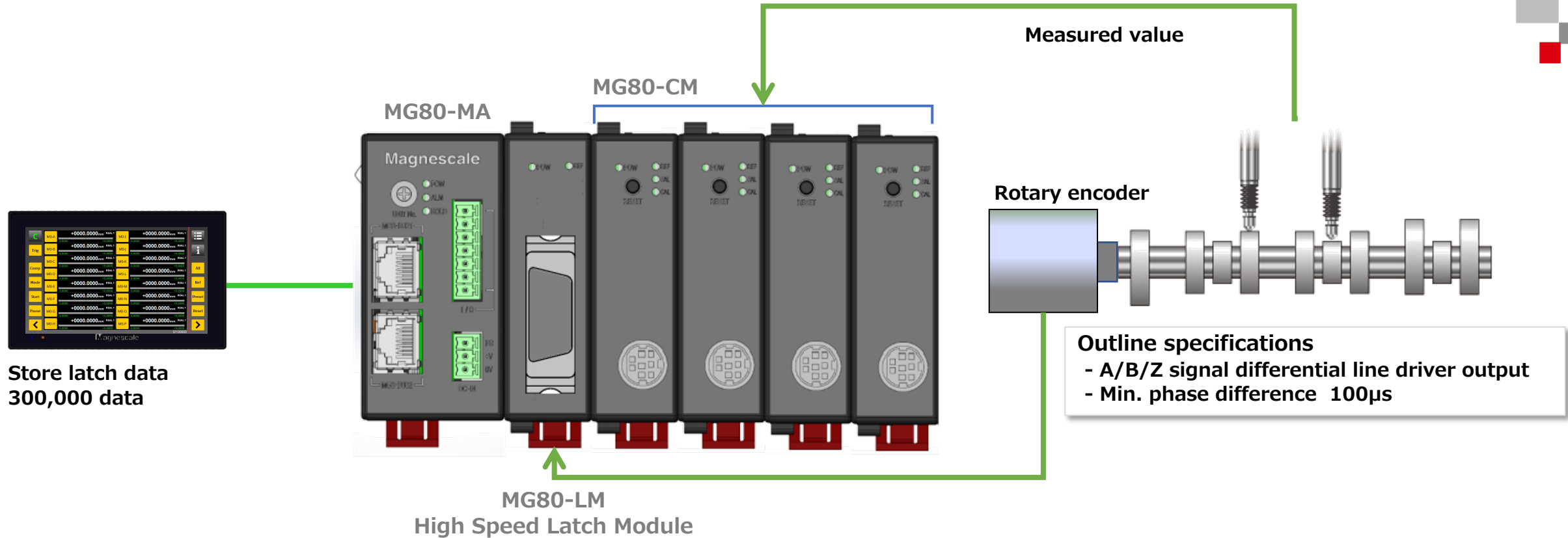
Maximum connectable modules : 32

Maximum 16 counter modules are connectable
per main module

Various connection structure between measurement stations

- Dedicated communication network between display and main module(LAN 100Base-TX)
- Recommended communication cable: general LAN cableCAT5e or more
- Maximum cable length is 20m between modules

High speed data latch by output pulse of rotary encoder



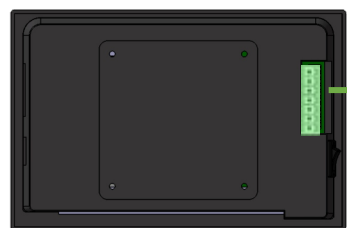
High speed latch function

- Latch measured value in counter module by the output pulse of rotary encoder
- High speed simultaneous latch with minimum pulse width of 100us
- Latch data is stored in display and batch output (EtherNet, SD card)
- Accumulative data is 180Mbyte (300,000 data)

Equipped with I/O that enables flexible settings



✓ I/O operation status can be monitored



General I/O

Display back side



I/O for main module

Functions can be assigned individually

PLC/Switch

- General I/O in display is function selectable
- Dedicated I/O in main module is for batch I./O of connected counter module
- Each function of counter module can be selected and set by I/O module
- I/O is for output of threshold judgment, reset, data output trigger, alarm

Utility software for Windows PC is available

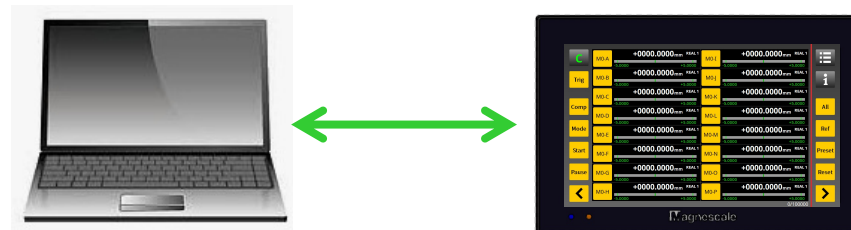
Off-line editor

The screenshots show the 'データ編集' (Data Edit) window of the 'LT80NE 設定データ オフライン編集ツール Ver. 1.0.0.0'. The interface includes a table for unit settings and a detailed table for segment parameters.

ユニットNo	測長ユニット設定	原点設定	ユニットNo	測長ユニット設定	原点設定
1	0.1 → μm + 使用				
2	0.5 → μm - 使用				
3	1.0 → μm - 未使用				
4	2.0 → μm + 未使用				
5	5.0 → μm + 未使用				
6	10.0 → μm + 未使用				
7	10.0 → μm - 未使用				
8	5.0 → μm + 未使用				

コンタクター 組番号	C1	C2	C3	C4
1	5.0011	2.1000	2.5100	7.1000
2	5.0022	2.2000	2.5200	7.2000
3	5.0033	2.3000	2.5300	7.3000
4	5.0044	2.4000	2.5400	7.4000
5	5.0055	2.5000	2.5500	7.5000
6	5.0066	2.6000	2.5600	7.6000
7	5.0077	2.7000	2.5700	7.7000
8	5.0088	2.8000	2.5800	7.8000

- Create setting parameter for LT80
- Save and edit parameters of LT80
- Write parameters that created and edited on the PC to LT80



Standard Ethernet

LT80 explorer

The screenshot shows the 'LT80-NEZクスプローラ' window. It displays a file list on the left and a file content view on the right.

ファイル名	内容
param20190423171918	measdata_20190425141046.csv
a.txt	measdata_20190425141316.csv
b.txt	measdata_20190425162033.csv
c.txt	param20190423171918

- Easily save the measuring data of LT80
- Save and write parameters of LT80



Since 1969

Magnescape