



Sylcom Quick Startup

sylvac

LOGIN

By default, 2 users are available.

Supervisor: User having all rights to set hardware and software parameters.

Operator: User with restricted access to use only existing configurations and data export.

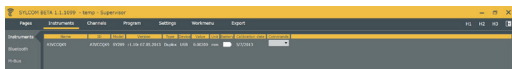
Default password for users: 123



CONNECTING AN INSTRUMENT

USB

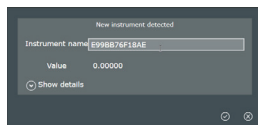
Go to the "Instrument menu" and plug your instrument, it will be automatically recognized.



NB: The maximum number of USB instruments connections depends on the PC hardware and Operating System : 8 (recommended), 15 (Win 64, USB 3.0), 36 (Win32, USB 2.0, with Sylcom "Advance" option).

Bluetooth®

Plug at least one Bluetooth® dongle to the PC, then go to the "Instrument menu". Turn on the Bluetooth® on your instrument and insure that the Bluetooth® symbol is blinking. Then run a scan to pair it. A blue bar shows the connection status at the bottom of the software and a prompt window appears as soon as the connection process is successful.



NB: The maximum number of BT instruments connections depends on your Sylcom license : 16 (Standard), 40 (Advance).

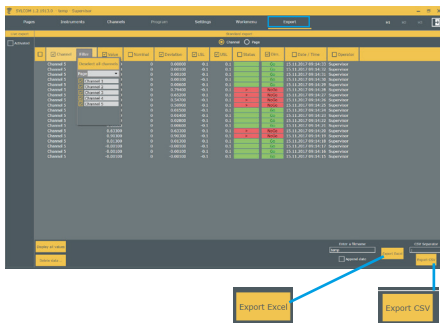
EXPORT MENU

Menu to manage export process.

Live export can be activated via "Activate" check box on the top left to send data to a focused window or to a specific file (txt, xls, ect.)

Differed (inspection post-process) export can be done via the 2 buttons on the bottom down, to a CSV, Excel XML file. It is possible to select channels, features (channel's name, values, deviation, etc.) to export.

Pressing the « Export Excel » button should open an Excel file if Excel is installed on the PC. Yet, for old Excel versions, you may need to make sure to associate the ".xml" extension with Excel application first. Same for "CSV".





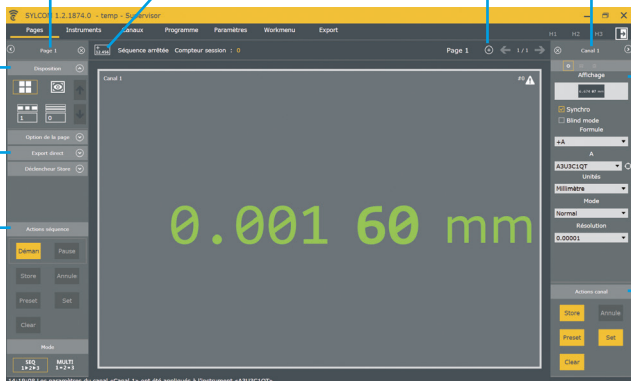
Sylcom Quick Startup

sylvac

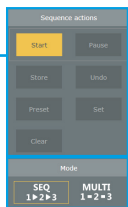
MAIN PAGE & BUTTONS

Sylcom interface is designed to connect your Sylvac instruments and configure channels in One-click. USB instruments are automatically connected to your PC.

Selection of page Add a new channel Add a page Selection of channel

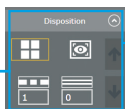


Left column



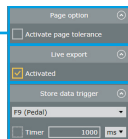
Parameters of sequences

Sequences/
Multigauges



Layout options :

- Automatic
- Free configuration
- Columns
- Rows



Use and Display global page classification for Go/NoGo

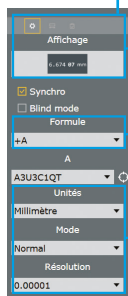
Direct Live export

Store a data via a trigger (e.g. foot pedal), and optionally with a timer

Right column



Selection of channel actions



Type of display

Selection of formula

Selection of unit, mode and resolution