

Our Bluetooth® range of products are designed to connect to a computer or laptop using the Sylvac USB Dongle.

For computers or tablets with built in Bluetooth® 4.0, it is possible to connect up to 5 instruments with Bluetooth® technology directly via the computer's built-in Bluetooth® without the need for a dongle.

However, the use of our Bluetooth® dongle is recommended to simplify and secure the connection of the instruments.

This software is a great user-friendly software which offers a simple interface allowing a wide range of visual and gauge customisation and data export.

There are 4 different versions of software LITE, STANDARD, PRO and EXPERT. Each option would have extended features and allow for additional connections.

Description	Part Number
Sylcom LITE	Free Download
Sylcom STANDARD	30-981-7129
Sylcom PRO	30-981-7245
Sylcom Expert	30-981-7255
USB Dongle	30-981-7100

Sylcom STANDARD, PRO and EXPERT are all provided via a digital licence with the software and future versions available to download from [Sylvac's website](#).

The LITE version is free to download but is limited to 1 connected instrument with the USB dongle.



Please let us know if you require an onsite demonstration or further information and we would be happy to discuss the best solution for your application.

A full demonstration with the PRO version can be seen by clicking/scanning the QR code.

### Sylcom Software Specifications

	Sylcom LITE	Sylcom Standard	Sylcom PRO	Sylcom Expert
<b>Max. number of instruments (Total/Cable/Bluetooth®)</b>	01 / 01 / 01	16 / 15 / 16	128 / 15 / 40	128 / 15 / 40
<b>Tolerance, numeric, bar graph, histogram, Go/No Go, manual data insertion</b>	x	x	x	x
<b>Statistics display</b>			x	x
<b>Basic calculation</b>	x	x	x	x
<b>Planarity and custom formulas</b>		x	x	x
<b>Multiscale data, simple sequence, auto-detection of the instrument, customizable background</b>	x	x	x	x
<b>Action programming, mixing measurements, traceability fields, control plans, skip a measurement or a control, display active characteristic only, Control plans mode</b>			x	x
<b>Foot pedal (USB, BT), bar code reader, MB-I/O, M-Bus</b>	x	x	x	x
<b>Exports focus/file/Excel/COM port</b>	x	x	x	x
<b>Export SPC</b>			x	x
<b>Create, activate or deactivate a user</b>	x	x	x	x
<b>Workmenu &amp; flashing display</b>	x	x	x	x
<b>OPC-UA mode</b>				x
<b>Tool(s) corrector (Machine Tool Compensation 25 connectors)</b>				x
<b>Tool(s) corrector (Machine Tool Compensation 1 connector)</b>	x	x	x	x
<b>Monitoring</b>	x	x	x	x
<b>Monitoring Cloud</b>				x

### Features

- Is compatible with M-BUS
- Data can be exported to Excel
- Shows tolerances and control limits
- Selectable display mode
- Multi-gauge mode
- Sequence mode
- User management
- Configuration of digital indicator menu

# Bluetooth Software & Functionality

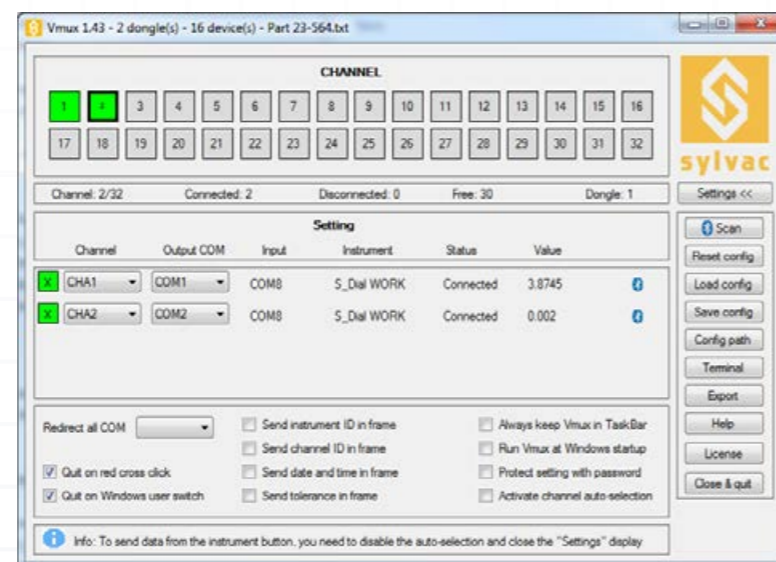


This software may be considered a virtual interface which assigns a COM port to instruments connected by wireless Bluetooth® transmission or by USB cable and then redirects the values from these instruments to any Windows software (SPC or other).

This is more basic software than the VMUX and is great if you require the data to be entered into a predesigned template or report.

Description	Part Number
Vmux LITE (1 instrument)	Free Download
Vmux LITE (8 Instrument)	Free Download
Vmux STANDARD	30-981-7161
USB Dongle	30-981-7100

This can be programmed in sequence to allow a single data trigger to take multiple points and then export the results.



The gauges can be connected to your phone or tablet using the Sylvac Anywhere app (IOS/Android). This free download allows the user to remotely monitor and preset the gauge and store the data onto the device.

A video demonstration is available below:



If you have any questions or would like to discuss using the Bluetooth functionality within your application please let us know on either 01276 469 866 or sales@bowergroup.co.uk

