

OPTICAL MEASURING MACHINES

The strategic diversification operated by Sylvac a few years ago led us to the development of optical machines that meets today's needs perfectly. Our SCAN machines, designed for the ultra-fast measurement of cylindrical parts, allow a multitude of elements that previously required countless pieces of equipment to be inspected in the workshop in a matter of seconds, with measurements which could have taken several hours before. The fact that our SCAN optical machines can be integrated into automation lines and communicate with the controls of production machines is also a perfect match for the Industry 4.0 model.

In this chapter you will also find our VISIO range of video measuring machines, which enable most industrial components to be checked quickly using a direct live image of the part displayed in the software.



Optical measurement

SYLVAC-SCAN

DESCRIPTION

S25 & S25T

- Vertical optical measuring machine for static and dynamic measurement of various elements on small cylindrical parts.
- The parts can be mounted between two centres or held in place using various accessories. Attractive design and robust construction with many new features: New touch screen control panel for easy operation directly at the work-place, bi-telecentric optical system, high resolution camera, precision rotary headstock with integrated and protected daily standard, quick and easy accessory changing system, integrated temperature sensors, dynamic LED indicator of the general status of the measured part (GO/NG) and operator messages. Equipped with an exclusive optics tilting system.
- Machines specially designed to measure threads such as, parallel, trapezoidal, conical, round, square, conical, worms, ball screws, bone screws, dental implants, etc.
- Reflex SCAN+ concept for measuring parts without prior programming at the touch of a button
- Delivered complete with a PC and the Reflex SCAN+ software, which allows a multitude of elements to be measured easily and intuitively.
- The machine is delivered fully equipped «Automation Ready» as standard.



J

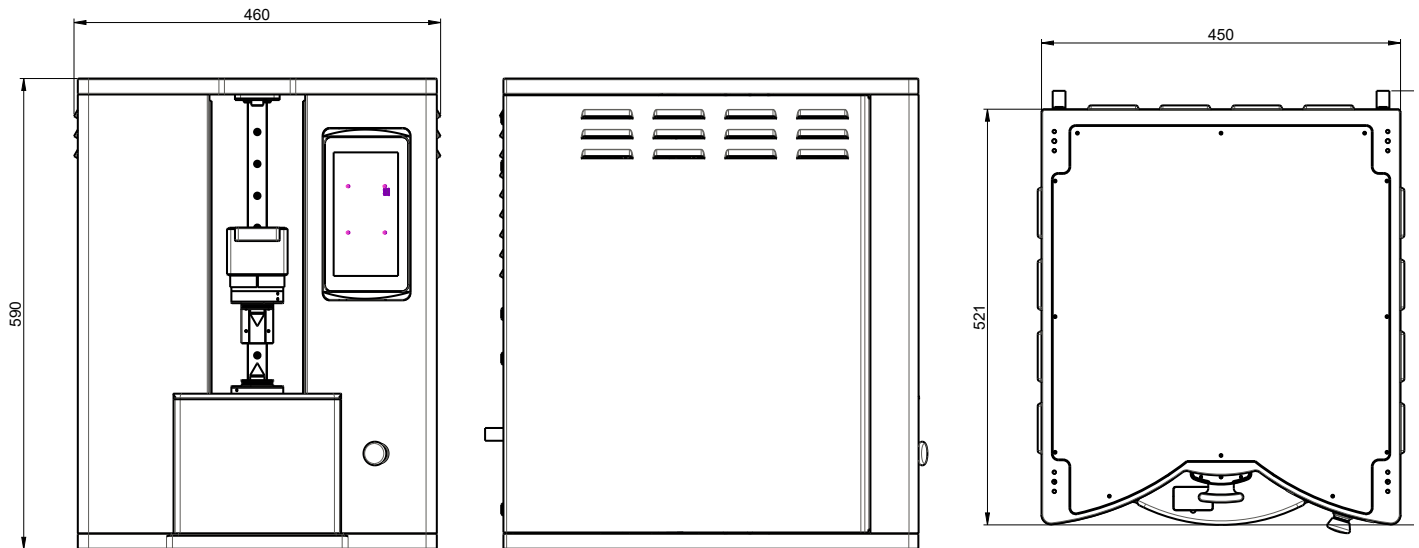


Optical measurement

SYLVAC-SCAN

DIMENSIONAL DRAWINGS

S25 & S25T



TECHNICAL SPECIFICATIONS

		902-4020*		902-4025	
		Sylvac SCAN S25		Sylvac SCAN S25T	
		Diameter	Length	Diameter	Length
Measuring range	mm	26	200	26	200
Resolution up to	mm	0.0001	0.0001	0.0001	0.0001
Max. error	µm	$0.9 + (D[\text{mm}]/100) \mu\text{m}^{1)}$	$2.5 + (L[\text{mm}]/200) \mu\text{m}^{1)}$	$0.9 + (D[\text{mm}]/100) \mu\text{m}^{1)}$	$2.5 + (L[\text{mm}]/200) \mu\text{m}^{1)}$
Repeatability 2σ	µm	0.5	0.8	0.5	0.8
Holding capacity diameter	mm	51	200	51	200
Tilting for thread measurement		-		• 30°	
Headstock		High precision rotary			
Axial move speed	mm/s	Up to 100mm/s			
Max. weight of part	kg	3			
Machine's weight	kg	73			

¹⁾ 20° C ± 1° C

STANDARD DELIVERY

- Instrument according to technical specifications
- Computer with screen, keyboard and mouse
- Windows multilingual operating system
- Sylvac Reflex SCAN Software +
- Accessories : 2x 902-6259 ISO / MK2 adapter, 2x 902-6202, 902-6161 & 902-6212
- Manual

Optical measurement

SYLVAC-SCAN

DESCRIPTION

F60 & F60T

- Vertical optical measuring machines for static or dynamic measurement of various elements on cylindrical workpieces.
- The parts can be mounted in between centers or held in place with various accessories.
- Attractive design and robust construction including many new features: Bi-telecentric optics, high-resolution CMOS camera, rotary headstock with integrated and protected daily calibration standard, quick and easy accessory changing system, integrated temperature sensors, LED indicator of the overall status of the measured part (GO/NG)
- The machine can be operated with the sliding door closed or open, with a light barrier automatically stopping the machine in case of intrusion.
- Reflex SCAN+ concept for measuring workpieces without prior programming at the touch of a button
- Available with tilt system (T) for true comprehensive thread measurement
- Delivered with a complete computer and the Reflex SCAN+ software allowing a multitude of elements to be measured in a simple and intuitive way.
- Machines that can be delivered in «Automation Ready» version on request



J

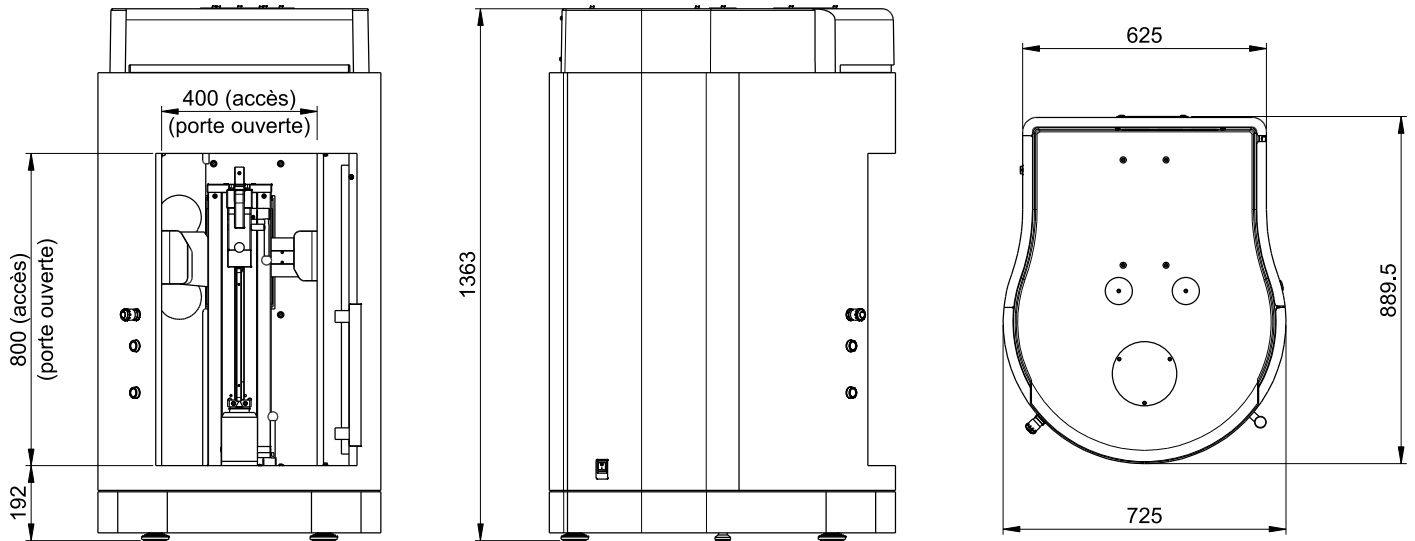


Optical measurement

SYLVAC-SCAN

DIMENSIONAL DRAWINGS

F60 & F60T



TECHNICAL SPECIFICATIONS

		902-4060		902-4065	
		Sylvac SCAN F60		Sylvac SCAN F60T	
		Diameter	Length	Diameter	Length
Measuring range	mm	64	300	64	300
Resolution up to	mm	0.0001	0.0001	0.0001	0.0001
Max. error	µm	1 + (D[mm]/100) µm ¹⁾	3 + (L[mm]/200) µm ¹⁾	1 + (D[mm]/100) µm ¹⁾	3 + (L[mm]/200) µm ¹⁾
Repeatability 2σ	µm	0.5	1.8	0.5	1.8
Holding capacity diameter	mm	120	315	120	315
Headstock	Rotary headstock for dynamic measurements				
Tilting for thread measurement		-		• 30°	
Axial move speed	mm/s	Up to 100mm/s			
Max. weight of part	kg	10			
Machine's weight	kg	265			

¹⁾ 20° C ± 1° C

STANDARD DELIVERY

- Instrument according to technical specifications
- Accessories : 2x 902-6202, 902-6161, 902-6212
- Computer with screen, keyboard and mouse
- Windows multilingual operating system
- Sylvac Reflex SCAN Software +
- Manual



Unique helix tilting system by Sylvac, for more comprehensive thread measurements.

Optical measurement

SYLVAC-SCAN

DESCRIPTION

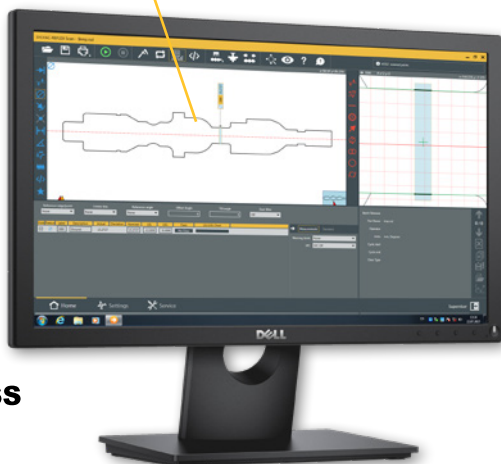
F60L & F60LT

- Optical machine similar to the F60, but in a long version, allowing measurements up to 500mm long and 64mm in diameter.
- Available in 2 versions :
 - 902-4062: SCAN F60L, measuring range Ø 0.5 to 64 mm, max. length 500 mm
 - 902-4067: SCAN F60LT, measuring range Ø 0.5 to 64 mm, max. length 500 mm, with tilting system Exclusive Sylvac up to an angle of 30° allows you to view and measure a multitude of additional elements on the threads, as their detailed profile is not visible unless viewed at the helix angle.
- Machines that can be delivered in «Automation Ready» version on request

Version L !



Unique helix tilting system by Sylvac, for more comprehensive thread measurements.



Software Reflex SCAN +

One click measurement

Door for dust protection

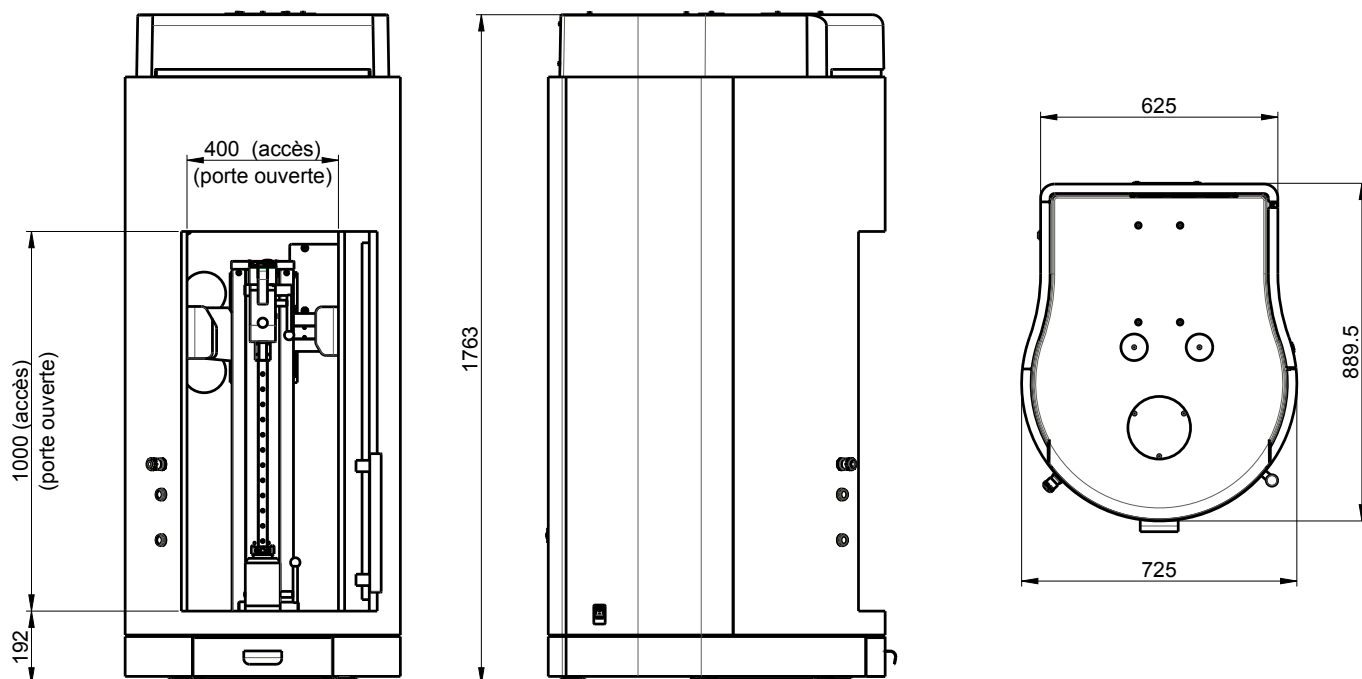


Optical measurement

SYLVAC-SCAN

DIMENSIONAL DRAWINGS

F60L & F60LT



TECHNICAL SPECIFICATIONS

		902-4062		902-4067	
		Sylvac SCAN F60L		Sylvac SCAN F60LT	
		Diameter	Length	Diameter	Length
Measuring range	mm	64	500	64	500
Resolution up to	mm	0.0001	0.0001	0.0001	0.0001
Max. error	µm	1 + (D[mm]/100) µm ¹⁾	3 + (L[mm]/200) µm ¹⁾	1 + (D[mm]/100) µm ¹⁾	3 + (L[mm]/200) µm ¹⁾
Repeatability 2σ	µm	0.5	1.8	0.5	1.8
Holding capacity diameter	mm	120	500	120	500
Headstock	Rotary headstock for dynamic measurements				
Tilting for thread measurement			• 30°		
Axial move speed	mm/s	Up to 100mm/s			
Max. weight of part	kg	10			
Machine's weight	kg	330			

¹⁾ 20° C ± 1° C

STANDARD DELIVERY

- Instrument according to technical specifications
- Accessories : 2x 902-6202, 902-6161, 902-6212
- Computer with screen, keyboard and mouse
- Windows multilingual operating system
- Sylvac Reflex SCAN Software +
- Manual

Optical measurement

SYLVAC-SCAN

DESCRIPTION

S145

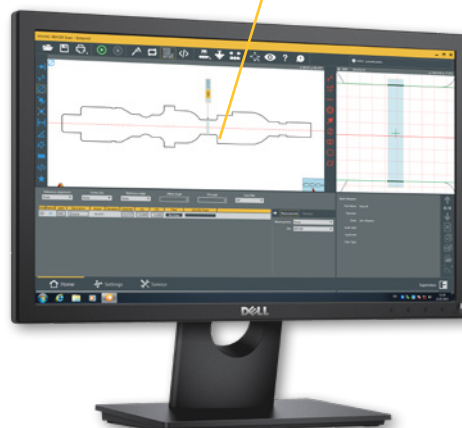
- New high-capacity optical measuring machines for static and dynamic measurement of various elements on cylindrical parts.
- The parts can be mounted in between centres or held in place with various accessories.
- Attractive design and sturdy construction with many new features: bi-telecentric optical system, high resolution camera, precision rotary headstock with integrated and protected daily calibration standard, motorised tailstock, quick and easy accessory changing system, integrated temperature sensors, LED indicator of the overall status of the measured part (GO/NG), light barrier automatically stops the machine in case of intrusion, removable roof for easy loading of heavy workpieces up to 100 kg and exceptional precision and repeatability
- Delivered complete with a PC and the Reflex SCAN+ software, which allows a multitude of elements to be measured easily and intuitively.
- Machine delivered fully equipped «Automation Ready» as standard



LED status light indicator

One click measurement

Software Reflex SCAN +



SCAN S145 with double table

Table with drawer



J

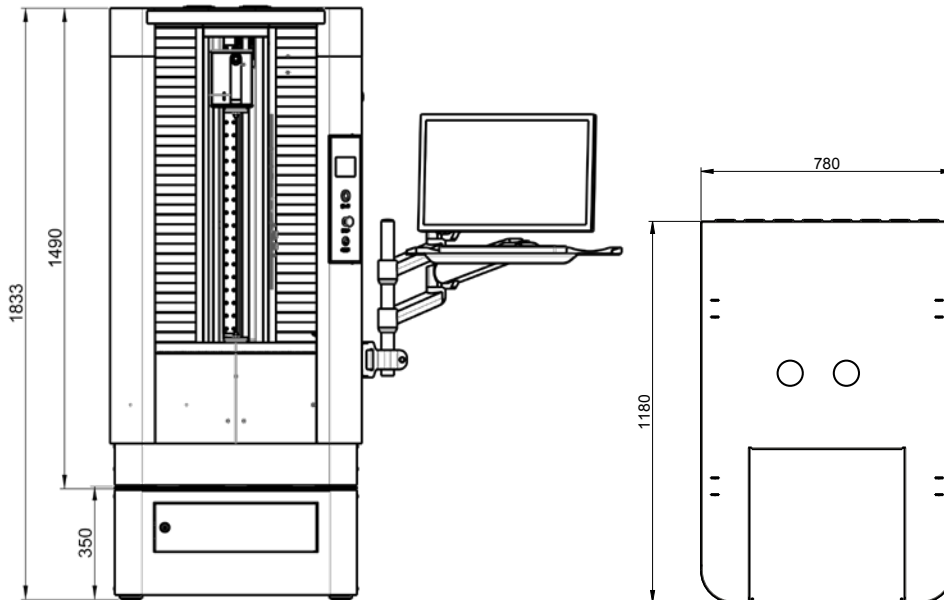


Optical measurement

SYLVAC-SCAN

DIMENSIONAL DRAWINGS

S145



TECHNICAL SPECIFICATIONS

		902-4145	
		Sylvac SCAN S145	
		Diameter	Length
Measuring range	mm	145	615
Resolution up to	mm	0.0001	0.0001
Max. error	µm	$1.5 + (D[\text{mm}]/100) \mu\text{m}^{1)}$	$4 + (L[\text{mm}]/200) \mu\text{m}^{1)}$
Repeatability 2σ	µm	0.5	1.0
Holding capacity diameter	mm	254	615
Axial positioning speed	mm/s	Up to 160	
Headstock		Rotary headstock for static and dynamic measurements	
Max. weight of part	kg	100	
Machine's weight	kg	530	

¹⁾ 20° C ± 1° C

STANDARD DELIVERY

- Instrument according to technical specifications
- Adapter for Morse 2 (902-6260)
- Computer with screen, keyboard and mouse
- Table 350mm (700mm optional, 902-6611)
- Windows multilingual operating system
- Sylvac Reflex SCAN Software +
- Manual
- Accessories 902-6210, 902-6380 & Machine stand, with screen & keyboard holder

Optical measurement

SYLVAC-SCAN

DESCRIPTION

S145L

- Optical machine similar to the S145, but in a long version, allowing measurements up to 1'280mm long and 254mm in diameter.
- Machine delivered fully equipped «Automation Ready» as standard



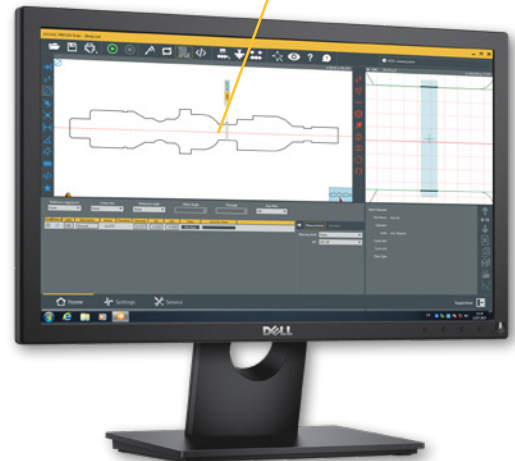
Version L !

LED status light indicator

One click measurement



Software Reflex SCAN +



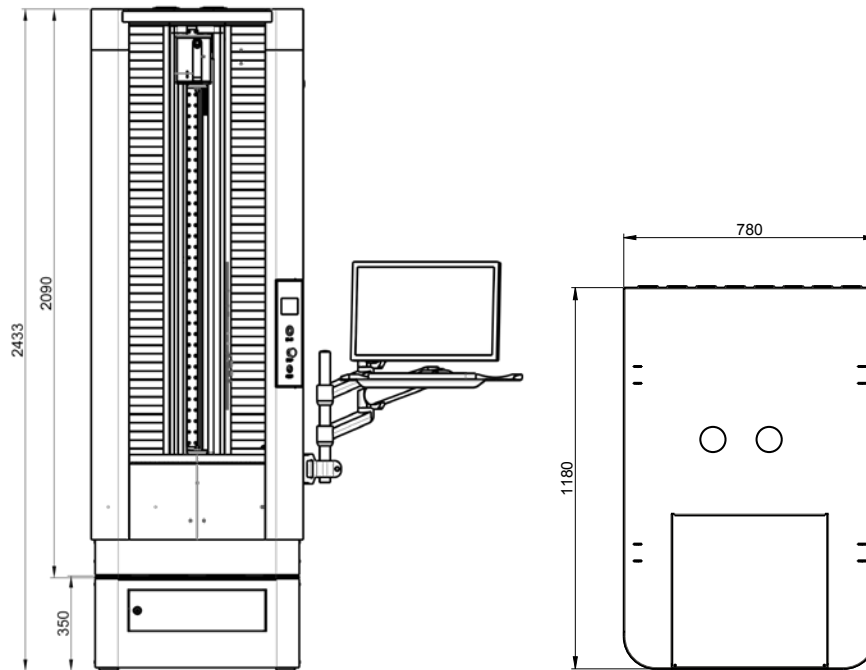


Optical measurement

SYLVAC-SCAN

DIMENSIONAL DRAWINGS

S145L



TECHNICAL SPECIFICATIONS

		902-4147	
		Sylvac SCAN S145	
		Diameter	Length
Measuring range	mm	145	1280
Resolution up to	mm	0.0001	0.0001
Max. error	µm	$1.5 + (D[\text{mm}]/100) \mu\text{m}^{1)}$	$4 + (L[\text{mm}]/200) \mu\text{m}^{1)}$
Repeatability 2σ	µm	0.5	1.0
Holding capacity diameter	mm	254	1280
Axial positioning speed	mm/s	Up to 160	
Headstock		Rotary headstock for static and dynamic measurements	
Max. weight of part	kg	100	
Machine's weight	kg	650	

¹⁾ 20° C ± 1° C

STANDARD DELIVERY

- Instrument according to technical specifications
- Adapter for Morse 2 (902-6260)
- Computer with screen, keyboard and mouse
- Machine stand, with screen & keyboard holder
- Windows multilingual operating system
- Sylvac Reflex SCAN Software +
- Manual

Optical measurement

SYLVAC-SCAN

TECHNICAL SPECIFICATIONS

SOFTWARES

	FUNCTIONS		
	SYLVAC REFLEX SCAN	SYLVAC REFLEX SCAN+	SYLVAC REFLEX SCAN+ PRO
Automatic measurement of the main features (diameters, lengths, angles, radius)	●	●	●
Automatic parts / program recognition	●	●	●
Reports editor	●	●	●
Data export	●	●	●
SPC basic calculation	●	●	●
Access management - security level	1	Multiple	Multiple
Off-line programming		Optional	Optional
Advanced dust filtering		●	●
Statistic view		●	●
CAD Import / Export / Compare			●
Script function			●
Monitoring SPC module			●
Thread wizard for custom threads			●

	GEOMETRICAL TOLERANCING - FEATURES SUMMARY		
	SYLVAC REFLEX SCAN	SYLVAC REFLEX SCAN+	SYLVAC REFLEX SCAN+ PRO
Diameters	●	●	●
Lengths, heights, distances	●	●	●
Angles, chamfers	●	●	●
Radii	●	●	●
Roundness	●	●	●
Cylindricity	●	●	●
Across flats	●	●	●
Rotational diameters	basic	●	●
Run out	basic	●	●
Concentricity	basic	●	●
Threads (parallel)	●	●	●
Threads taper		●	●
Advanced threads (root detail, taper, multistarts, worm screws,...)		● Tilt machines only	● Tilt machines only
Custom threads (bone-screws, dental implants, etc.)			●
Perpendicularity		●	●
Form deviation		●	●
Straightness		●	●
Interrupted parts (splines, turbines)		●	●

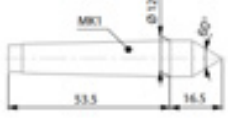
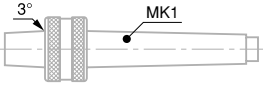
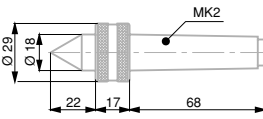
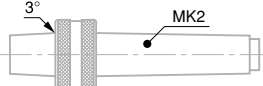
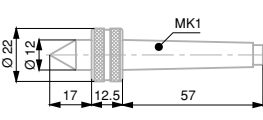
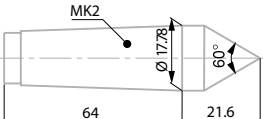
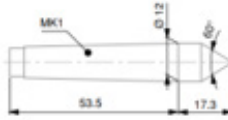
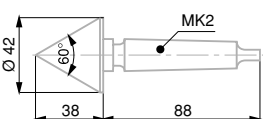


Optical measurement

SYLVAC-SCAN

ACCESSORIES

CENTRES AND DRIVE CENTRES

			SCAN S25T ISO30	Morse 2 SCAN F60	SCAN S145 ISO40
	902-6000	Male centre 10 mm MK1	• Requires 902-6360	• Requires 902-6360	• Requires 902-6360
	902-6160	Rotation centre with a B12 male taper plus a Morse 1 taper shank	• Requires 902-6360	• Requires 902-6360	• Requires 902-6360
	902-6161	Rotation centre, Morse 2	•	•	•
	902-6162	Rotation centre with a B18 male taper plus a Morse 2 taper shank	•	•	•
	902-6163	Rotation centre, Morse 1	• Requires 902-6360	• Requires 902-6360	• Requires 902-6360
	902-6202	Male centre 17.78 mm, extra (Standard delivery with Sylvac-SCAN S25, F60 and S145)	•	•	•
	902-6203	Drive centre (Diamond coated 10mm)	• Requires 902-6360	• Requires 902-6360	• Requires 902-6360
	902-6210	Drive centre, Ø 42 mm plus a Morse 2 taper shank Diamond coated	•	•	•

J

Optical measurement

SYLVAC-SCAN

ACCESSORIES

CENTRES AND DRIVE CENTRES

		SCAN S25T	SCAN F60	SCAN S145	
	902-6211	Non diamond coated Drive centre Ø 42mm	•	•	•
	902-6212	Centre MK2 diamond coated, Ø 17mm	•	•	•
	902-6341	Male centre, Ø 15÷40 mm, plus a Morse 2 taper shank	•	•	•
	902-6380	Rotation centre Ø 42mm MK2	•	•	•
	902-6410	Drive centre - diamond coated, with reference diameter. Ø 42 mm max.	•	•	•
	902-6420	Small male centre	• Requires 902-6251		
	902-6421	Small male rotating centre	• Requires 902-6251		

ACCESSORIES

INVERTED V-CENTRES

	902-6204	Female centre Ø10mm Capacity Ø3 - 10mm	• Requires 902-6251	• Requires 902-6251	• Requires 902-6251
		902-6205	Female centre Ø20mm Capacity Ø5 - 20mm	• Requires 902-6251	• Requires 902-6251

J



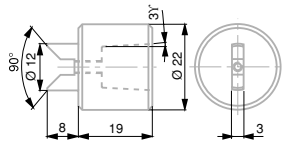
Optical measurement

SYLVAC-SCAN

ACCESSORIES

INVERTED V-CENTRES

SCAN S25T SCAN F60 SCAN S145



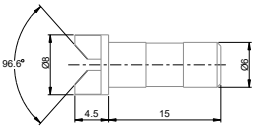
902-6206

Rotating female centre Ø10mm
Capacity Ø3 - 10mm

•
Requires
902-6360
902-6160

•
Requires
902-6360
902-6160

•
Requires
902-6360
902-6160



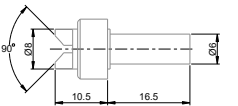
902-6214

Small Female centre 5mm

•
Requires
902-6251

•
Requires
902-6251

•
Requires
902-6251



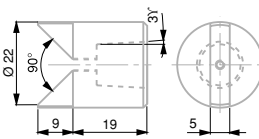
902-6215

Small Rotating female centre 5mm

•
Requires
902-6251

•
Requires
902-6251

•
Requires
902-6251



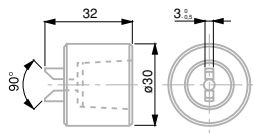
902-6207

Rotating female centre Ø20mm
Capacity Ø5 - 20mm

•
Requires
902-6360
902-6160

•
Requires
902-6360
902-6160

•
Requires
902-6360
902-6160



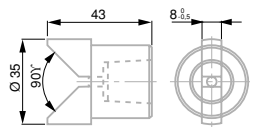
902-6310

Female centre Ø10mm
Capacity Ø3 - 10mm

•
Requires
902-6162

•
Requires
902-6162

•
Requires
902-6162



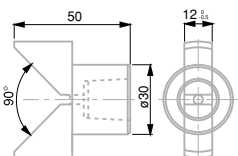
902-6311

Rotating female centre Ø30
Capacity Ø5 - 30mm

•
Requires
902-6162

•
Requires
902-6162

•
Requires
902-6162



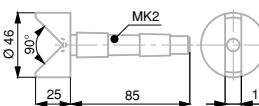
902-6312

Female centre Ø45mm

•
Requires
902-6162

•
Requires
902-6162

•
Requires
902-6162



902-6340

Female centre Ø40mm MK2
Capacité Ø5 - 40mm

•

•

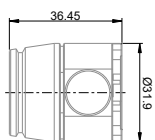
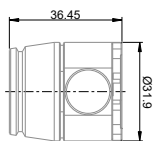
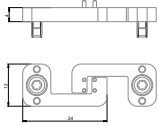
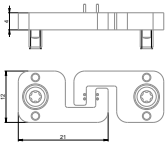
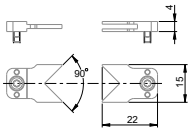
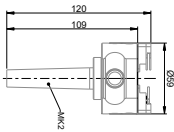
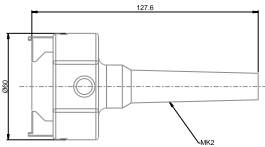
•

Optical measurement

SYLVAC-SCAN

ACCESSORIES

MANUAL CHUCKS



		SCAN S25T	SCAN F60	SCAN S145
902-6222	Two-jaw gripper External clamping for manual use	•	•	• Requires 902-6260
902-6270	2-jaw gripper Ø 1-19.5mm MK2 (delivered without jaws)	•	•	•
902-6271	External jaws Ø 1-19.5mm, H=4mm for gripper 902-6270	•	•	•
902-6272	External jaws Ø 2-5mm, H=2mm (for gripper 902-6270)	• For 902-6270	• For 902-6270	• For 902-6270
902-6273	External jaws Ø 5-10mm, H=3mm (for gripper 902-6270)	• For 902-6270	• For 902-6270	• For 902-6270
902-6274	External jaws Ø 1-19.5, H=8mm (for gripper 902-6270)	• For 902-6270	• For 902-6270	• For 902-6270
902-6275	External jaws Ø 1-19.5mm, H=14mm (for gripper 902-6270)	• For 902-6270	• For 902-6270	• For 902-6270
902-6276	Jaw raiser, H=10mm (for gripper 902-6270)	• For 902-6270	• For 902-6270	• For 902-6270
902-6280	Micro pincer Ø 0.1 - 1.00mm (10 - 75g clamping force)	•		
902-6281	Micro pincer Ø 0.5 - 2.50mm (50 - 250g clamping force)	•		

J



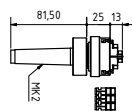
Optical measurement

SYLVAC-SCAN

ACCESSORIES

MANUAL CHUCKS

SCAN S25T SCAN F60 SCAN S145



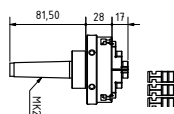
902-6306

3-jaw chuck MK2
External clamping Ø 0.5mm - 41mm
Internal clamping Ø 12mm - 36mm
Step Height : 5mm

•

•

•
Requires
902-6260



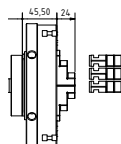
902-6307

3-jaw chuck MK2
External clamping Ø 1mm - 71mm
Internal clamping Ø 18mm - 66mm
Step Height : 10mm

•

•

•
Requires
902-6260



902-6308

3-jaw chuck ISO40
External clamping Ø 1mm - 150mm
Internal clamping Ø 34mm - 174mm
Step Height : 10mm

•

•

902-6140

6-12mm/T=15mm

902-6141

0-6mm/T=1.5mm

902-6142

0-6mm/T=3mm

902-6143

6-12mm/T=15mm

902-6144

12-18mm/T=6mm

902-6145

18-24mm/T=9mm

902-6152

0-6mm/T=6mm

902-6153

0-6mm/T=15mm

External jaws,
in pairs

For

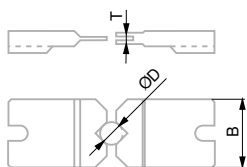
902-6220,
902-6221,
902-6222,
902-6223

For

902-6220,
902-6221,
902-6222,
902-6223

For

902-6220,
902-6221,
902-6222,
902-6223



Set with 5 articles

902-6154

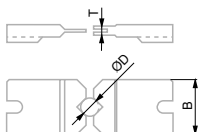
External jaws, in pairs

902-6141 : Jaws dia 0-6mm, T1=1.5mm, B=18mm
902-6142 : Jaws dia 0-6mm, T1=1.3mm, B=18mm
902-6143 : Jaws dia 6-12mm, T1=3mm, B=18mm
902-6144 : Jaws dia 12-18mm, T1=6mm, B=20mm
902-6145 : Jaws dia 18-24mm, T1=9mm, B=25mm

Requires
902-6220, 902-
6221, 902-6222,
902-6223

Requires
902-6220, 902-
6221, 902-6222,
902-6223

Requires
902-6220, 902-
6221, 902-6222,
902-6223



902-6231

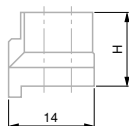
H=22

Raising blocks
for external jaws,
in pairs

Requires
902-6220, 902-
6221, 902-6222,
902-6223

Requires
902-6220, 902-
6221, 902-6222,
902-6223

Requires
902-6220, 902-
6221, 902-6222,
902-6223



J

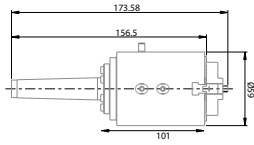
Optical measurement

SYLVAC-SCAN

ACCESSORIES

PNEUMATIC CHUCKS

SCAN S25T SCAN F60 SCAN S145



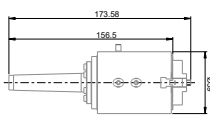
902-6309

3-jaw pneumatic chuck MK2
1mm - 60mm

--

•

--



902-6316

3-jaw pneumatic chuck MK2
0.5mm - 41mm

•

--

--

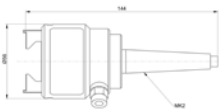
902-6318

3-jaw pneumatic chuck ISO40
1mm - 150mm

--

•

--



902-6223

2-jaw pneumatic chuck MK2

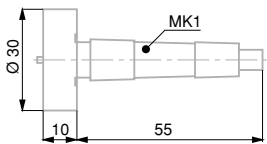
•

•

--

ACCESSORIES

PLATES



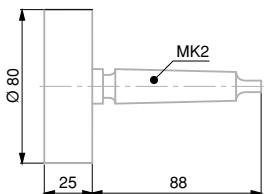
902-6208

Plate, Ø 30 mm MK1

• Requires 902-6360

• Requires 902-6360

• Requires 902-6360



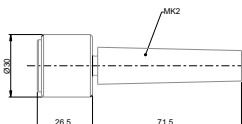
902-6209

Plate, Ø 80 mm MK2

•

•

•



902-6228

Magnetic clamping plate
Ø0-24 mm MK2

•

•

•

J

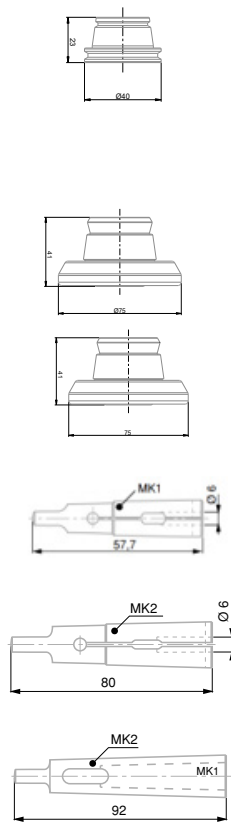


Optical measurement

SYLVAC-SCAN

ACCESSORIES

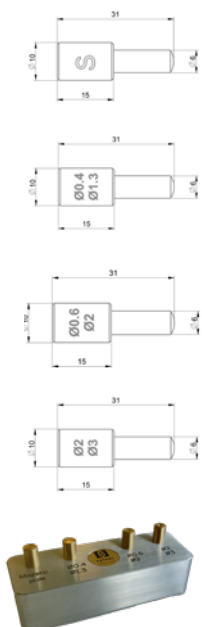
ADAPTERS



		SCAN S25T	SCAN F60	SCAN S145
902-6258	Adapter MK1 for SCAN S25	•		
902-6259	Adapter MK2 for SCAN S25	•		
902-6260	Adapter MK2 for SCAN S145			•
902-6263	Adapter MK3 for SCAN S145			•
902-6250	Adapter with bore Ø 6 mm MK1	• Requires 902-6360	• Requires 902-6360	• Requires 902-6360
902-6251	Adapter with bore Ø 6 mm MK2	•	•	•
902-6360	Reduction sleeve DIN 2185 MK A/I 2:1	•	•	•

ACCESSORIES

PLATES



902-6330	Centered magnetic plate, magnetized - SUD for the headstock	• Requires 902-6251		
902-6335	Magnetic gripper with V for parts with Ø0.4mm - 1.3mm tip, magnetized - NORD	• Requires 902-6251		
902-6336	Magnetic gripper with V for parts with Ø0.6mm - 2.0mm tip, magnetized - NORD	• Requires 902-6251		
902-6337	Magnetic gripper with V for parts with Ø2.0mm - 3.0mm tip, magnetized - NORD	• Requires 902-6251		
902-6339	Set of 3 NORTH magnetic plates (902-6335, 902-6336, 902-6337) and 1 SOUTH magnet (602-6330)	• Requires 902-6251		

J

Optical measurement

SYLVAC-SCAN

ACCESSORIES

SCAN S25T SCAN F60 SCAN S145



Reflex SCAN+ Standard
(delivered with 902-4060, 902-4062,
902-4065, 902-4067, 902-4020 & 902-4025)

•

•

•

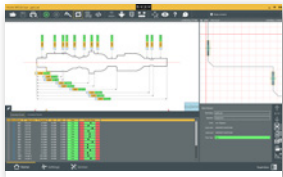
902-7015

Reflex SCAN+ Offline Software

•

•

•



902-7017

Reflex-SCAN+ Automation software module
(Option, require Reflex SCAN+, standard delivery
with S145 and S25)

•

•

•



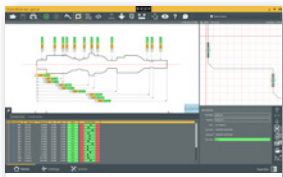
902-7021

Reflex-Scan+ «PRO» including, advanced thread
wizard, CAD compare, Monitoring SPC, scripting

•

•

•



902-7022

Reflex-SCAN+ PRO Offline

•

•

•

J














Optical measurement

SYLVAC-SCAN

ACCESSORIES

SCAN S25T SCAN F60 SCAN S145

	902-6012	Gold demo part	•	•	•
	902-6013	Gold demo part for threads	•	•	•
	902-6014	Gold demo part XL			•
	902-6600	Table for Sylvac SCAN F60 (85x85x70cm)	•	•	
	902-6601	Furniture for Sylvac SCAN F60 storage for PC, drawer with lock and arm for keyboard and screen		•	
	902-6602	Table S25T (75x75mm), selectable height 75cm or 105cm	•		
	902-6605	Height-adjustable table (71-1140mm) for keyboard, screen and mouse (80x60mm)	•	•	
	902-6607	Accessories tidy insert for drawer (included with 902-6601)		•	
	928.6006	Plastiform case for SCAN and VISIO	•	•	•
	902-6609	Rack	•	•	•
	902-6611	Option table 700mm (replaces the standard 350mm table)			•
	902-6608	Automation preparation for F60 series (I/O & Pneumatic prep, includes 902-7017)		•	
	902-6610	Pneumatic actuation of tailstock for F60 series		•	
	602-104-01	Protective cover	•		

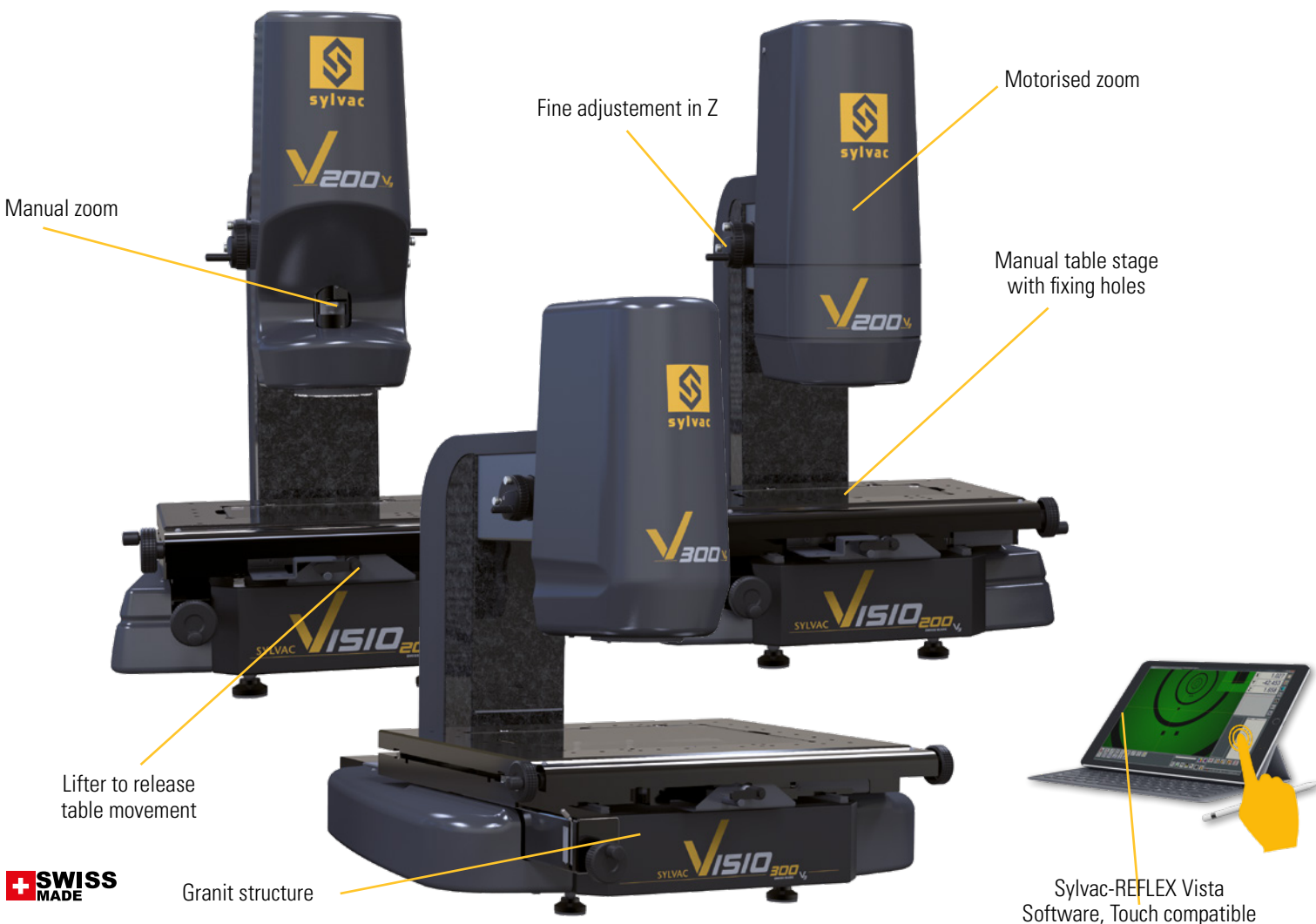
Optical measurement

SYLVAC-VISIO

DESCRIPTION

200 & 300 V3

- High quality ergonomic 2.5D optical (video) measuring system
- Extremely robust and durable construction with granite base and gooseneck
- Full HD camera with wide field of view for increased accuracy
- Manual X-Y table with quick-release and high-precision guidance
- Manual or motorised zoom depending on the version
- Lighting with ring light adjustable in segments, coaxial light and diasopic light
- Delivered complete with a computer with touch screen and the very easy to use Reflex-Vista software offering a wide range of functionalities: Semi-automatic intuitive measurement, automatic edge detection, comparison with imported DXF contour
- Available in 3 versions :
 - 902-2210: VISIO 200, manual zoom, measuring range 200 x 100 x 150 mm
 - 902-2211: VISIO 200, motorised zoom, measuring range 200 x 100 x 150 mm
 - 902-2212: VISIO 300, motorised zoom, measuring range 300 x 200 x 150 mm
- Numerous accessories available



J

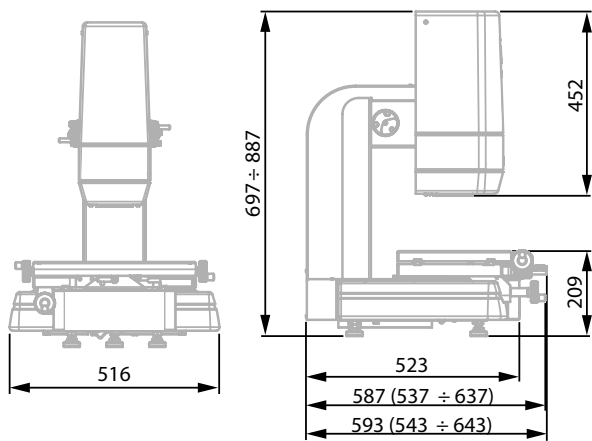


Optical measurement

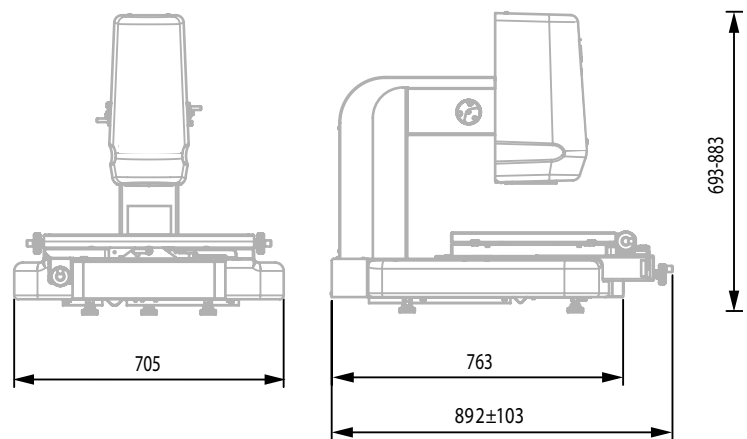
SYLVAC-VISIO

DIMENSIONAL DRAWINGS

200 & 300 V3



Sylvac VISIO 200 V3



Sylvac VISIO 300 V3

TECHNICAL SPECIFICATIONS

		902-2210	902-2211	902-2310
Model		Sylvac Visio 200		Sylvac Visio 300
Measuring volume	mm	200x100x150		300x200x150
X, Y Accuracy (E ₁ , X, Y)	µm	1.9 + 10L/1000 (L = mm) ^{1) 3)}		1.9 + 4L/1000 (L = mm) ^{1) 3)}
XY Accuracy (E ₂ , XY)	µm	2.4 + 10L/1000 (L = mm) ^{1) 3)}		2.4 + 4L/1000 (L = mm) ^{1) 3)}
Z Accuracy (E ₁ , Z) ²⁾	µm	2.9 + 10L/1000 (L = mm)		2.9 + 10L/1000 (L = mm)
Resolution	mm	0.001		0.001
Max. load capacity	kg	10		20
Magnification (screen 23.8")		24x - 144x (12x - 288x with additional lenses)		
Zoom		Manuel 4x	Motorised 6x	Motorised 6x
Weight		98		170
International standards		EN61000-6-2, EN61000-6-4, EN61326-1, EN12100-1, EN12100-2		

¹⁾ m ≤ 5 kg

²⁾ mechanical accuracy

³⁾ at glass plate level

STANDARD DELIVERY

- Instrument according to technical specifications
- Software Sylvac-REFLEX Vista multilingual
- Computer with touchscreen 23.8", keyboard and mouse
- CAD compare software
- Windows 10 multilingual operating system
- Manual
- Calibration certificate

Optical measurement

ACCESSORIES



		VISIO 200	VISIO 300
902-6020	Visio demo part	•	•



902-7370	Diascopic illumination, parallel light	•	•
-----------------	--	---	---

902-7100	Additional lens, 0,5x for zoom 6,5x	•	•
-----------------	-------------------------------------	---	---

902-7101	Additional lens, 0,75x for zoom 6,5x	•	•
-----------------	--------------------------------------	---	---



902-7102	Additional lens, 1.5x for zoom 6,5x	•	•
-----------------	-------------------------------------	---	---

902-7103	Additional lens, 2x for zoom 6,5x	•	•
-----------------	-----------------------------------	---	---



902-7380	Foot switch for value capture	•	•
-----------------	-------------------------------	---	---



902-7390	Sylvac - Reflex Vista COMPARE	Standard delivery	Standard delivery
-----------------	-------------------------------	----------------------	----------------------



928-6006	Plastiform case for SCAN and VISIO	•	•
-----------------	------------------------------------	---	---



Optical measurement

SYLVAC-VISIO

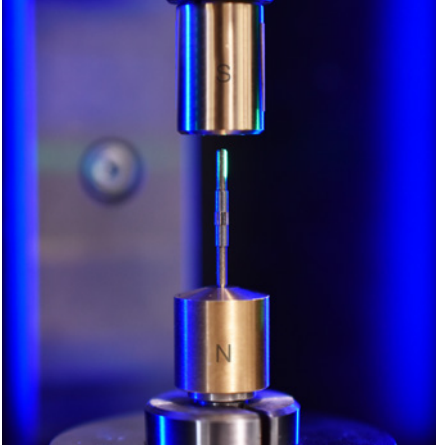
ACCESSORIES

		VISIO 200	VISIO 300
	<p>902-7300</p> <p>Basic fixtures Kit :</p> <ul style="list-style-type: none"> • 1x Quick-Load Corner Fixture (QLC) • 1x 13mm x 150mm x 150mm R&R Acrylic Multi-Hole Fixture Plate • 1x (3) Dowel Pins • 3x 6mm Dia. x 10 and x 25mm Standoff • 3x 9mm Dia. x 5, x 10, x 20 and x 25mm Standoff • 3x 12mm Dia. x 10 and x 25mm Standoff • 2x 6mm Dia. x 10mm Pin Standoff • 2x 9mm Dia. x 10mm Pin Standoff • 2x 40mm Tension Clamp with Rubber Coated Tip • 2x 25mm Wire Clamp with Rubber Coated Tip • 2x 50mm Wire Clamp with Rubber Coated Tip • 4x Aluminium Resting Pin with M4 Thread • 1x 50mm x 50mm Corner Viewer for M4 • 1x 9mm Dia. Adjustable Jackstand with M4 Thread • 1x M4 Pusher Clamp • 1x 30mm and 1x 45mm Long Adjustable Slide with M4 Thread • 1x M4 Tower Block • 1x Micro-Clamp Vise with Base for M4 Components • 1x 12mm Dia. x10mm Spring Pusher Standoff Clamp • 1x 300mm x 190mm x 25mm Component Tray to Hold M4 Components 	<p>•</p> <p>•</p>	<p>•</p> <p>•</p>
	<p>902-7301</p> <p>Advanced fixtures Kit :</p> <p>All Basic fixtures (acrylic plate 13x200x200mm) kit added with :</p> <ul style="list-style-type: none"> • 3x 6mm Dia. x 5, x 10 and x 25mm Standoff • 3x 9mm Dia. x 10, x 20, x 25mm Standoff • 3x 12mm Dia. x 10, x25mm Standoff • 2x 6mm Dia. x 10mm Pin Standoff • 2x 9mm Dia. x 10mm Pin Standoff • 4x 12mm Dia. x 10mm Pin Standoff • 2x 40mm Tension Clamp with Rubber Coated Tip • 2x 25mm Wire Clamp with Rubber Coated Tip • 2x 50mm Wire Clamp with Rubber Coated Tip with 50mm Post • 1x 9mm Dia. Adjustable Jackstand with M4 Thread • 1x 30mm and 1x 45mm Long Adjustable Slide with M4 Thread • 1x Base 16mm Sq x 19mm (for M4 Tower Block) 	<p>•</p> <p>•</p>	<p>•</p> <p>•</p>
	<p>902-7104</p> <p>Fresnel kit 0.5x / Fresnel lens + lens 0.5x + fixation screws (for Ringlight)</p>	<p>•</p>	<p></p>
	<p>902-7105</p> <p>Fresnel kit 0.75x / Fresnel lens + lens 0.75x + fixation screws (for Ringlight)</p>	<p>•</p>	<p></p>
	<p>902-7106</p> <p>Fresnel kit 1.5x / Fresnel lens + lens 1.5x + fixation screws (for Ringlight)</p>	<p>•</p>	<p></p>
	<p>902-7108</p> <p>Fresnel kit 0.5x / Fresnel lens + lens 0.5x + fixation screws (for Ringlight)</p>	<p></p>	<p>•</p>

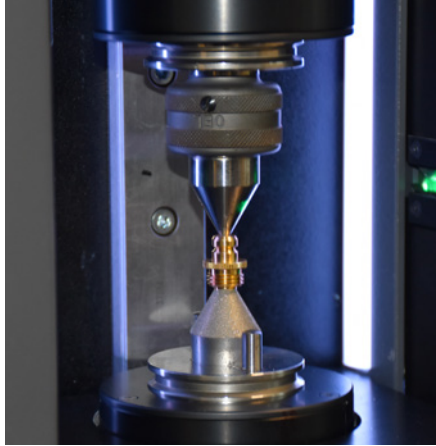
J

Optical measurement

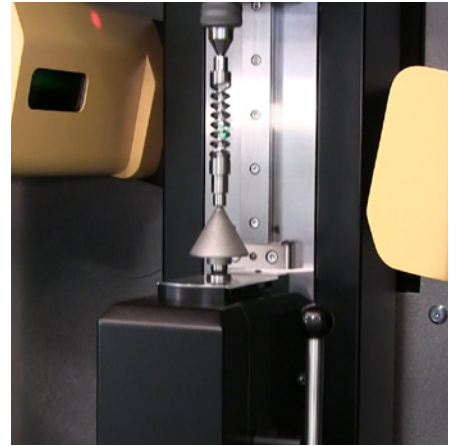
APPLICATIONS



Measurement of small parts by magnetic levitation on SCAN S25T



Part measurement with SCAN S25T



Thread measurement with SCAN F60T



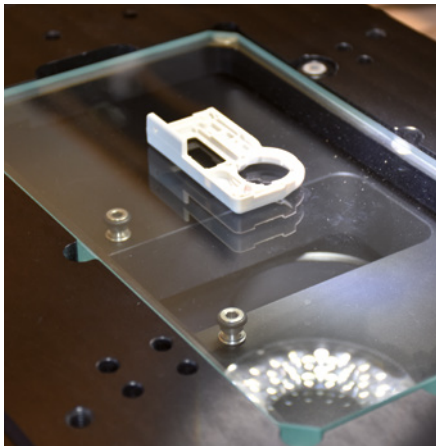
Part measurement with SCAN F60



Part measurement with SCAN F60L



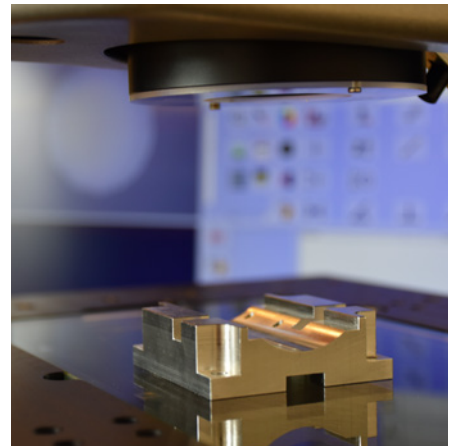
Universal robot and SCAN S25T



Part lighted by ring light on VISIO



Part lighted by diasopic light on VISIO



Part lighted by coaxial light on VISIO

J